

**RESERVDELSLISTA**  
**SPARE PARTS LIST**  
**ERSATZTEILVERZEICHNIS**

---

Tremix Planglättere/Trowel/Plan-Glätter  
**G COMBI E**

Fr.o.m. maskin 511/ From machine No 511/Ab Maschine No 511

---



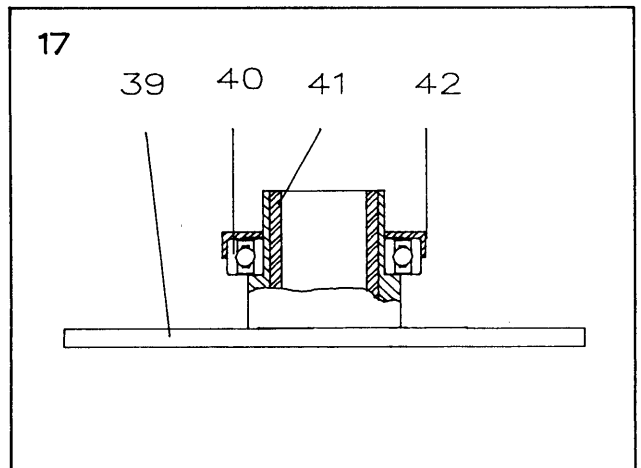
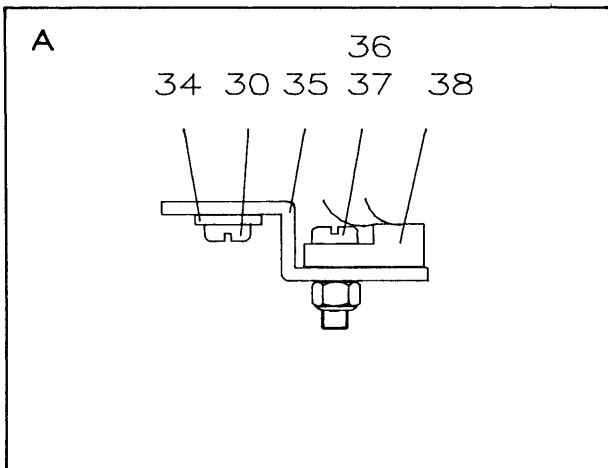
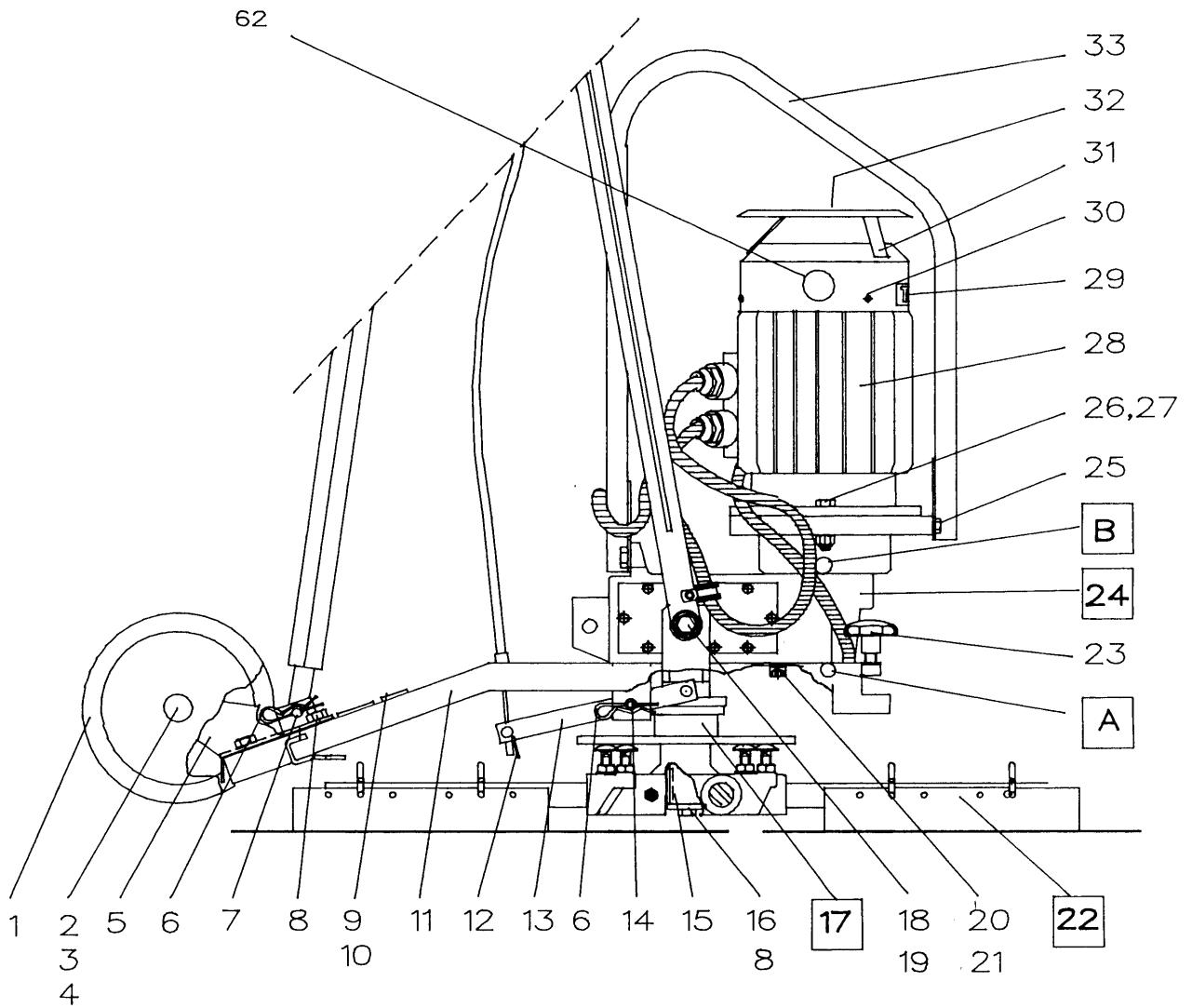
**TREMIX®**

RESERVDELSLISTA ♦ SPARE PARTS LIST ♦ ERSATZTEILVERZEICHNIS

List No  
2:419  
Date  
9508

Tremix Planglättnare/Trowel/Plan-Glätter  
G Combi E

| Pos | Qty | Benämning                | Denomination               | Benennung                         | Note          | No.   |
|-----|-----|--------------------------|----------------------------|-----------------------------------|---------------|-------|
| 1   | 2   | Hjul                     | Wheel                      | Rad                               |               | 1926  |
| 2   | 2   | Saxsprint                | Split pin                  | Splint                            | Ø 3.2x32      | x     |
| 3   | 2   | Bricka                   | Washer                     | Scheibe                           | BRB21x37x3    | x     |
| 4   | 2   | Låsbricka                | Lock washer                | Sicherungsscheibe                 | Ø 20          | 1950  |
| 5   | 1   | Hjulställ                | Wheel stand                | Radgestell                        |               | 21942 |
| 6   | 3   | Hårnålsprint             | Pin                        | Splint                            | Ø 2.5         | x     |
| 7   | 1   | Cyl.bult                 | Cylindrical bolt           | Zyl.Bolzen                        | MCB 10x28     | x     |
| 8   | 5   | Skruv                    | Screw                      | Schraube                          | M6S 10x20     | x     |
| 9   | 1   | Skylt 220 V              | Sign 220 V                 | Schild 220V                       |               | 43990 |
|     | 1   | Skylt 380 V              | Sign 380 V                 | Schild 380V                       |               | 43991 |
| 10  | 6   | Popnit                   | Pop nail                   | Popnadel                          | Ø 2,4         | x     |
| 11  | 1   | Brygga                   | Stay                       | Stange                            |               | 21930 |
| 12  | 1   | Hårnålsprint             | Pin                        | Sprint                            | Ø 3           | x     |
| 13  | 1   | Gaffel                   | Fork                       | Gabel                             |               | 32415 |
| 14  | 1   | Axel                     | Shaft                      | Welle                             |               | 47261 |
| 15  | 1   | Kil                      | Key                        | Keil                              | 10x8x50       | x     |
| 16  | 1   | Bricka                   | Washer                     | Scheibe                           | TBRBS 13x36x6 | x     |
| *17 | 1   | Tryckplatta kpl          | Pressure plate             | Druckplatte kompl                 |               | 47256 |
| 18  | 2   | Skruv                    | Screw                      | Schraube                          | M6S10x40      | x     |
| 19  | 2   | Bussning                 | Bushing                    | Buchse                            |               | 47259 |
| 20  | 4   | Skruv                    | Screw                      | Schraube                          | MC6S10x20     | x     |
| 21  | 4   | Fjäderbricka             | Spring washer              | Federschraube                     | FBB Ø 10      | x     |
| 22  | 1   | Bladkors kpl             | Blade center complete      | Blattkreuz kompl                  |               | 11634 |
| 23  | 2   | Vred                     | Knob                       | Griff                             |               | 1994  |
| *24 | 1   | Kuggväxel kpl            | Gear reduction complete    | Zahngetriebe kompl                | 50 Hz         | 1904  |
| *   | 1   | Kuggväxel kpl            | Gear reduction complete    | Zahngetriebe kompl                | 60 Hz         | 2132  |
| 25  | 4   | Skruv                    | Screw                      | Schraube                          | M6S 8x20      |       |
| 26  | 4   | Skruv                    | Screw                      | Schraube                          | M6S 10x35     | x     |
| 27  | 4   | Mutter                   | Bolt                       | Mutter                            | M10 Nyloc     | x     |
| 28  | 1   | Elmotor 200 V            | Motor 200 V                | Motor 200 V                       |               | 3421  |
|     | 1   | Elmotor 220 V            | Motor 220 V                | Motor 220 V                       |               | 3350  |
|     | 1   | Elmotor 380 V            | Motor 380 V                | Motor 380 V                       |               | 3328  |
| 29  | 1   | Dekal "TREMIX"           | Label "TREMIX"             | Abziehbild "TREMIX"               |               | 1558  |
| 30  | 3   | Skruv                    | Screw                      | Schraube                          | ECS 5x8       | x     |
| 31  | 1   | Fläktkåpa med droppskydd | Fan casing with drop guard | Ventilatorgehäuse mit Tropfschutz |               | 2197  |
| 32  | 1   | Dekal                    | Label                      | Abziehbild                        |               | 46239 |
| 33  | 1   | Lyftbygel                | Lifting eye                | Hebebügel                         |               | 32079 |
| 34  | 8   | Fjäderbricka             | Spring washer              | Federscheibe                      | FBB M 5       | x     |
| 35  | 1   | Skyddsplåt               | Cover plate                | Schutzblech                       |               | 47285 |
| 36  | 4   | Skruv                    | Screw                      | Schraube                          | ECS 3X12      | x     |
| 37  | 2   | Mutter                   | Nut                        | Mutter                            | M3 Nyloc      | x     |
| 38  | 1   | Magnetgivare             | Magnet coupling            | Magnetschalter                    |               | 3313  |
| 39  | 1   | Tryckplatta              | Pressure plate             | Druckplatte                       |               | 47255 |

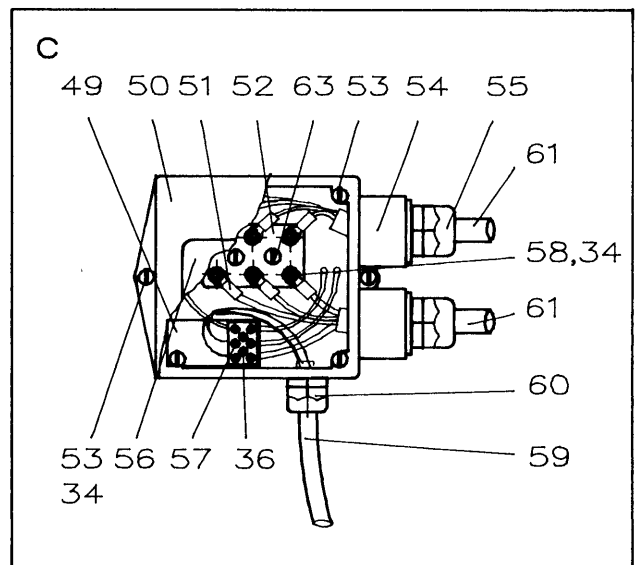
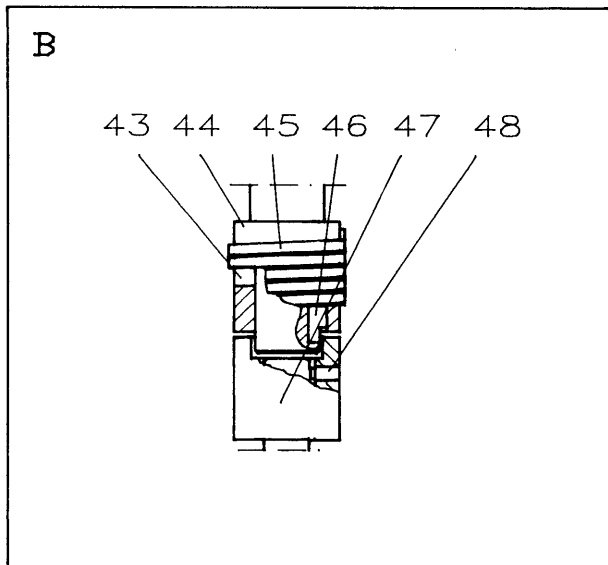
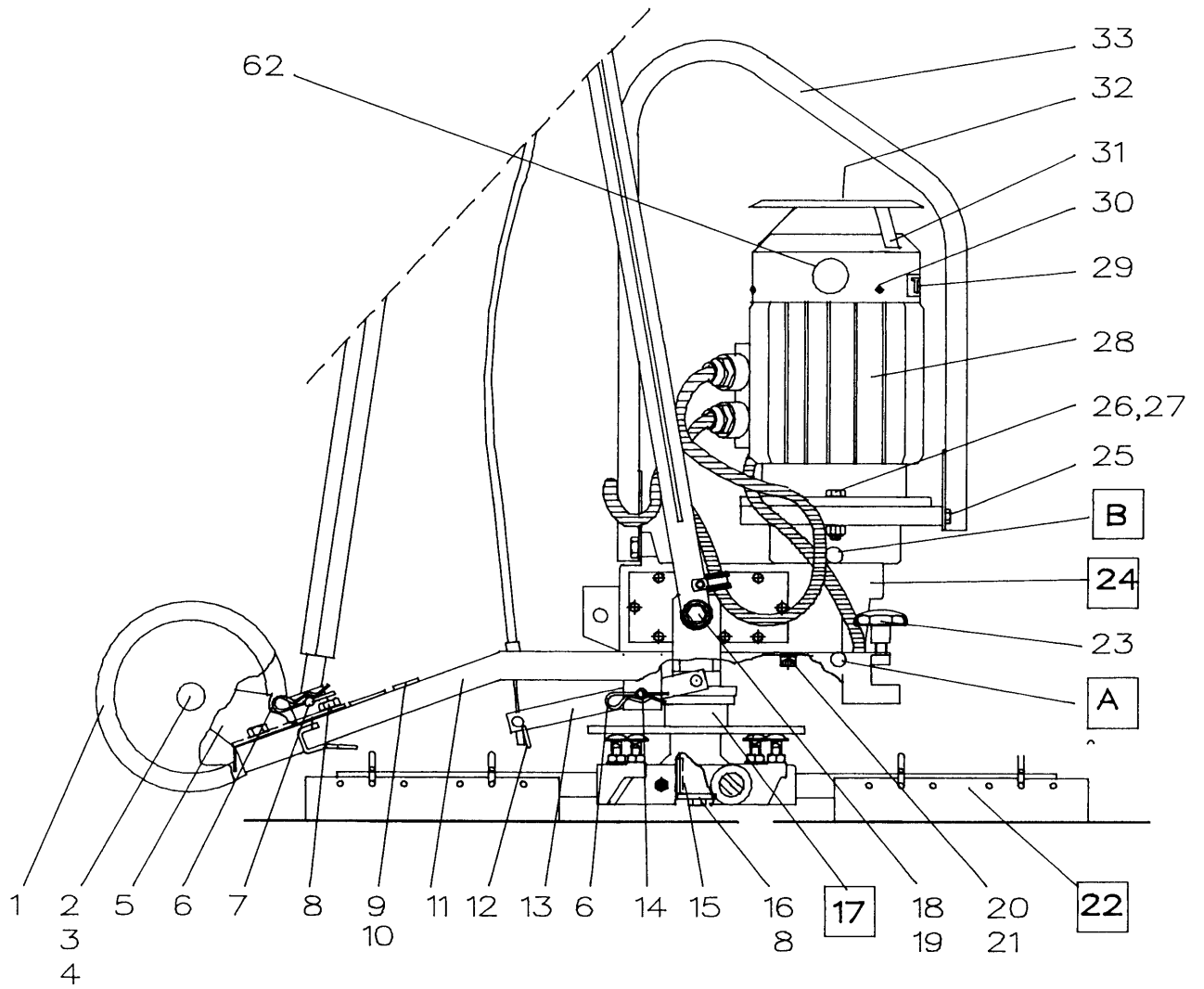


RESERVDELSLISTA ♦ SPARE PARTS LIST ♦ ERSATZTEILVERZEICHNIS

List No  
2:419  
Date  
9508

Tremix Planglättnare/Trowel/Plan-Glätter  
G Combi E

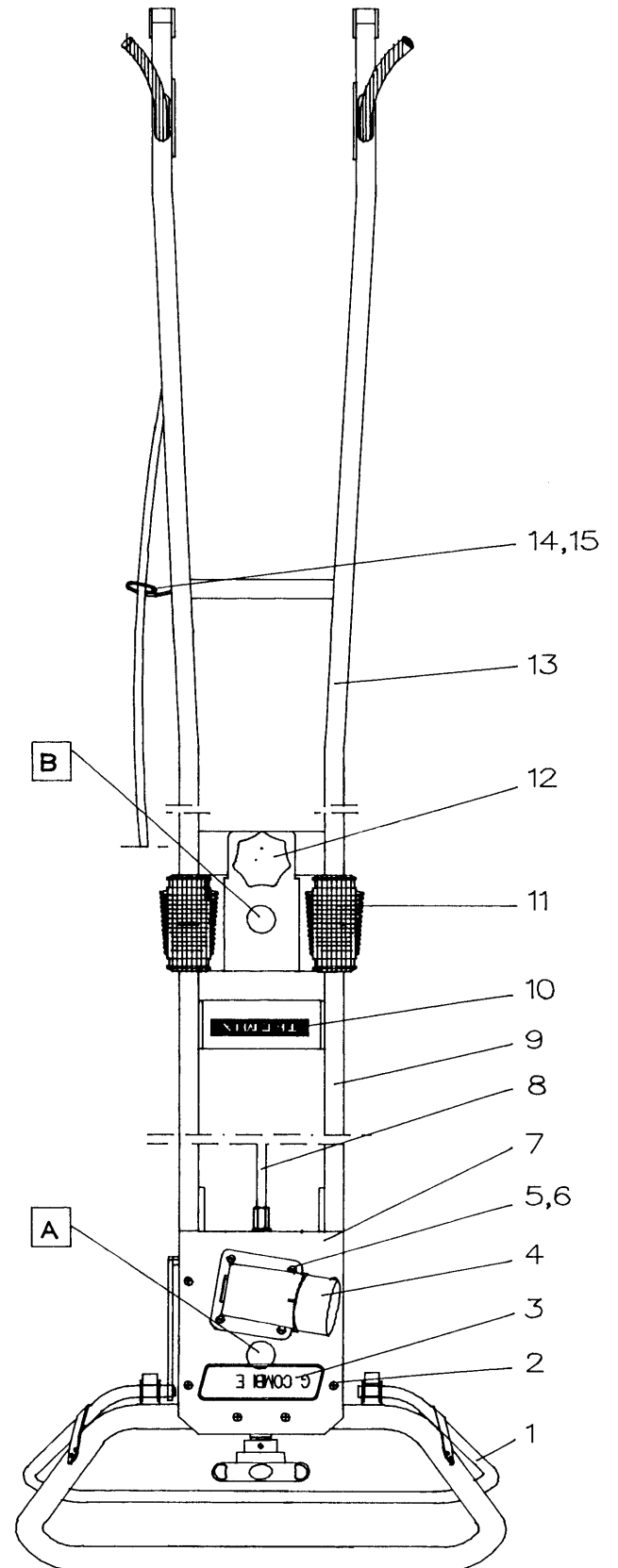
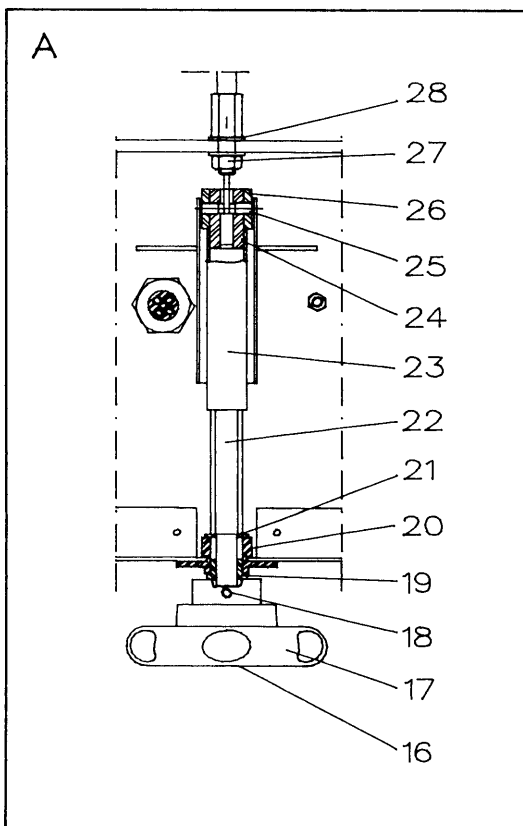
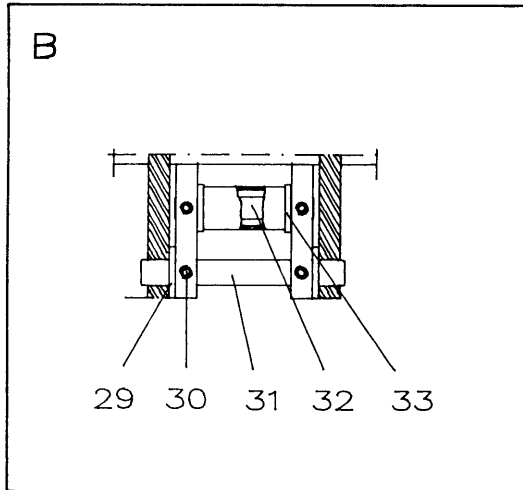
| Pos | Qty | Benämning            | Denomination         | Benennung                  | Note                        | No.   |
|-----|-----|----------------------|----------------------|----------------------------|-----------------------------|-------|
| 40  | 1   | Kullager             | Ball bearing         | Kugellager                 | 6010-2RS1                   | 115   |
| 41  | 1   | Glidlager            | Plain bearing        | Gleitlager                 | 35x45x50                    | 093   |
| 42  | 1   | Stödbricka           | Support washer       | Stützscheibe               |                             | 47257 |
| 43  | 1   | Stoppskruv           | Stop screw           | Anschlagschraube           | Sk6SS 8x8                   | x     |
| 44  | 1   | Övre kopplings-halva | Upper coupling half  | Obere Kupplungshälfte      |                             | 47375 |
| 45  | 1   | Drivfjäder           | Drive spring         | Treibfeder                 |                             | 47385 |
| 46  | 1   | Plattkil             | Flat key             | Flachkeil                  |                             | 47427 |
| 47  | 1   | Undre kopplingshalva | Lower coupling half  | Niedrigere Kupplungshälfte |                             | 47429 |
| 48  | 1   | Stoppskruv           | Stop screw           | Anschlagschraube           | T6SS 6x10                   |       |
| 49  | 1   | Montagebleck         | Assembly sheet metal | Montierungsblech           |                             | 47681 |
| 50  | 1   | Lock inkl.tätning    | Lid including seal   | Deckel einschl. Dichtung   |                             | 2186  |
| 51  | 1   | Kabelsko             | Cable lug            | Kabelschuh                 | A2553 R                     | 3090  |
| 52  | 1   | Plint                | Block                | Klemmenbrett               |                             | 3446  |
| 53  | 6   | Skruv                | Screw                | Schraube                   | ECS 5x20                    | x     |
| 54  | 1   | Plintlåda            | Block box            | Klemmenbrett kasten        |                             | 47678 |
| 55  | 2   | Kabelför-skruvning   | Gland nut            | Kabelver-schraubung        | pg 16                       | 1063  |
| 56  | 1   | Skylt 200 V"Tejp"    | Sign 200V" Tape"     | Schild 200V Klebeband      |                             | 46357 |
|     | 1   | Skylt 230V"Tejp"     | Sign 230V" Tape"     | Schild 230V Klebeband      |                             | 43985 |
|     | 1   | Skylt 400 V"Tejp"    | Sign 400V "Tape"     | Schild 400 V Klebeband     |                             | 43986 |
|     | 1   | Skylt 60 Hz "Tejp"   | Sign 60 Hz "Tape"    | Schild 60 Hz Klebeband     |                             | 46000 |
| 57  | 2   | Kopplingsplint       | Terminal block       | Klemmenbrett               | 3-pol                       | 3403  |
| 58  | 12  | Mutter               | Nut                  | Mutter                     | M5                          | x     |
| 59  | 1   | Slang                | Hose                 | Schlauch                   | Ø 12/8 L=440mm              | 2087  |
| 60  | 1   | Kabelför-skruvning   | Gland nut            | Kabelver-schraubung        | pg11                        | 1064  |
| 61  | 2   | Kabel                | Cable                | Kabel                      | 5x1.5mm <sup>2</sup> 2x2,7m | 1022  |
| 62  | 1   | Fläkt                | Fan                  | Ventilator                 |                             | 2198  |
| 63  | 2   | Skruv                | Screw                | Schraube                   | ECS 5x10                    |       |



**RESERVDELSLISTA ♦ SPARE PARTS LIST ♦ ERSATZTEILVERZEICHNIS**

|         |  |
|---------|--|
| List No | <h1 style="margin: 0;">Tremix Planglättnare/Trowel/Plan-Glätter</h1> <h2 style="margin: 0;">G Combi E</h2> <p style="margin: 0;">Manöverhandtag/Operating handle/Bedienungshandgriff</p> |
| 2:419   |  |
| Date    |  |
| 9508    |  |

| Pos | Qty | Benämning              | Denomination                | Benennung                               | Note            | No.   |
|-----|-----|------------------------|-----------------------------|---|-----------------|-------|
| 1   | 1   | Säkerhetsspärr         | Safety catch                | Sicherheitssperre                       |                 | 32585 |
| 2   | 11  | Skruv                  | Screw                       | Schraube                                | Rxx B8x6,5      | x     |
| 3   | 1   | Dekal                  | Label                       | Abziehbild                              |                 | 47372 |
| 4   | 1   | Apparatintag 200-230 V | Appliance inlet 200-230V    | Gerätestecker 200-230V                  |                 | 1080  |
| -   | 1   | Apparatintag 380-415V  | Appliance inlet 380-415V    | Gerätestecker 380-415V                  |                 | 1076  |
| 5   | 4   | Skruv                  | Screw                       | Schraube                                | ECS 5x16        | x     |
| 6   | 4   | Mutter                 | Nut                         | Mutter                                  | Nyloc           | x     |
| 7   | 1   | Lock                   | Lid                         | Deckel                                  |                 | 32593 |
| 8   | 1   | Bladinställningswire   | Blade adjusting wire        | Blatteinstell-ungsdraht                 |                 | 32433 |
| 9   | 1   | Handtag, överdel       | Handle, upper part          | Handgriff, Oberteil                     |                 | 11710 |
| 10  | 1   | Dekal "TREMIX"         | Label "TREMIX"              | Abziehbild "TREMIX"                     |                 | 1558  |
| 11  | 2   | Gummibälg              | Rubber bellows              | Gummifalten-balg                        |                 | 1995  |
| 12  | 1   | Låsvred                | Locking handle              | Verriegelungs-griff                     |                 | 46930 |
| 13  | 1   | Handtag, underdel      | Handle, lower part          | Handgriff, Unterteil                    |                 | 21935 |
| 14  | 1   | Kabelhållare           | Cable holder                | Kabelhalter                             |                 | 46431 |
| 15  | 1   | Skruv                  | Screw                       | Schraube                                | RxPT B8x16      | x     |
| 16  | 1   | Dekal<br>"öka-minska"  | Label<br>"increase- reduce" | Abziehtext"<br>vergrössern- vermindern" |                 | 45902 |
| 17  | 1   | Ratt                   | Hand wheel                  | Handrad                                 |                 | 45837 |
| 18  | 1   | Spännstift             | Tensioning pin              | Spannstift                              | SP 5x30         | x     |
| 19  | 1   | Flänslager             | Flange bearing              | Flanschlager                            |                 | 039   |
| 20  | 1   | Lagerfäste             | Bearing holder              | Lagerhalter                             |                 | 47313 |
| 21  | 1   | Bricka                 | Washer                      | Scheibe                                 | BRB 10,5x22x2   | x     |
| 22  | 1   | Inställningsskruv      | Adjustment screw            | Einstellungsschraube                    |                 | 45840 |
| 23  | 1   | Inställningsmutter     | Adjustment nut              | Einstellungsmutter                      |                 | 46343 |
| 24  | 1   | Wirelås                | Wire joint                  | Drahtschloss                            |                 | 46280 |
| 25  | 2   | Stoppskruv             | Stop screw                  | Anschlag-schraube                       | T6SS 5x12       | x     |
| 26  | 1   | Styrning               | Guiding piece               | Führungswürfel                          |                 | 45839 |
| 27  | 11  | Mutter                 | Nut                         | M8                                      |                 | x     |
| 28  | 2   | Bricka                 | Washer                      | Scheibe                                 | 8.4x18x1,5      | x     |
| 29  | 2   | Bricka                 | Washer                      | Scheibe                                 | BRB 12,5x24x2,5 | x     |
| 30  | 3   | Stoppskruv             | Stop screw                  | Anschlage-schraube                      | SK6SS 6x8       | x     |
| 31  | 1   | Ledaxel                | Guide shaft                 | Führungswelle                           |                 | 47337 |
| 32  | 1   | Axel                   | Shaft                       | Welle                                   |                 | 47309 |
| 33  | 2   | Oljebronsager          | Oil bronze bearing          | Ölbronzelager                           |                 | 114   |



**RESERVDELSLISTA ♦ SPARE PARTS LIST ♦ ERSATZTEILVERZEICHNIS**

|         |  |
|---------|--|
| List No | <h2 style="margin: 0;">Tremix Planglättnare/Trowel/Plan-Glätter</h2> <h3 style="margin: 0;">G Combi E    Manöverhandtag/Operating handle/Bedienungs-handgriff</h3> |
| 2:419   |  |
| Date    |  |
| 9508    |  |

| Pos | Qty | Benämning                             | Denomination   | Benennung                                      | Note          | No.     |
|-----|-----|---------------------------------------|--|--|---------------|---------|
| 34  | 4   | Bricka                                | Washer   | Scheibe  | BRB 4,3x9x0,8 | x       |
| 35  | 2   | Spärr                                 | Catch  | Sperr  |               | 47663   |
| 36  | 4   | Lagerhalva                            | Bearing half   | Lagerhälft                                     |               | 45820   |
| 37  | 4   | Skruv                                 | Screw  | Schraube                                       | ECS 5x30      | x       |
| 38  | B1  | Elsystem kpl<br>380-415V,5-pol + N    | Electrical system compl.<br>380-415V, 5-poles + N      | Elektr.System kpl.<br>380-415V 5-polig + N     |               | 22008   |
|     | B1  | Elsystem kpl<br>200-230V 4-pol        | Electrical system compl.<br>200-230V 4-poles           | Elektr.System kpl.<br>200-230V-4-polig         |               | 22011   |
|     | C1  | Elsystem kpl<br>380-415V 5-pol utan N | Electrical system compl.<br>380-415V 5-poles without N | Elektr.System kpl.<br>380-415V 5-polig nicht N |               | 22006   |
| 39  | 1   | Band B= 5 mm<br>L= 3,5 m              | Strips W=5mm<br>Length 3.5 mm                          | Leisten W=5mm<br>L=3,5 m                       |               | 2020    |
| 40A | 1   | Stag, övre                            | Stay, upper  | Obere Stütze                                   |               | *47281  |
| 40B | 1   | Stag, övre                            | Stay, upper  | Obere Stütze                                   |               | **48102 |
| 41  | 1   | Vred                                  | Lever  | Griff  |               | 46289   |
| 42A | 1   | Stag, undre                           | Stay, lower  | Untere Stütze                                  |               | *47280  |
| 42B | 1   | Stag, undre                           | Stay, lower  | Untere Stütze                                  |               | **48103 |
| 43  | 2   | Gummiklammer                          | Rubber clip  | Gummischelle                                   |               | 1680    |
| 44  | 2   | Skruv                                 | Screw  | Schraube                                       | BSS B8x13     | x       |
| 45  | 2   | Oljebronsager                         | Oil bronze bearing                                     | Ölbronzelager                                  |               | 110     |
| 46  | 6   | Bricka                                | Washer   | Scheibe  | BRB 3,5x7x0,5 | x       |
| 47  | 1   | Magnet                                | Magnet   | Magnet   |               | 3314    |
| 48  | 2   | Skruv                                 | Screw  | Schraube                                       | ECS 3x12      | x       |
| 49  | 1   | Kapsling                              | Encasing   | Kapselung                                      |               | 22013   |
| 50  | 1   | Tryckknapp kpl.                       | Push button compl.                                     | Druckknopf kompl.                              |               | 3315    |
| 51  | 1   | Dekal "Start"                         | Label "Start"  | Abziehbild "Start"                             |               | 44855   |
| 52  | 1   | Huv                                   | Hood   | Kappe  |               | 3400    |
| 53  | 4   | Skruv                                 | Screw  | Schraube                                       | MFS 3x12      | x       |

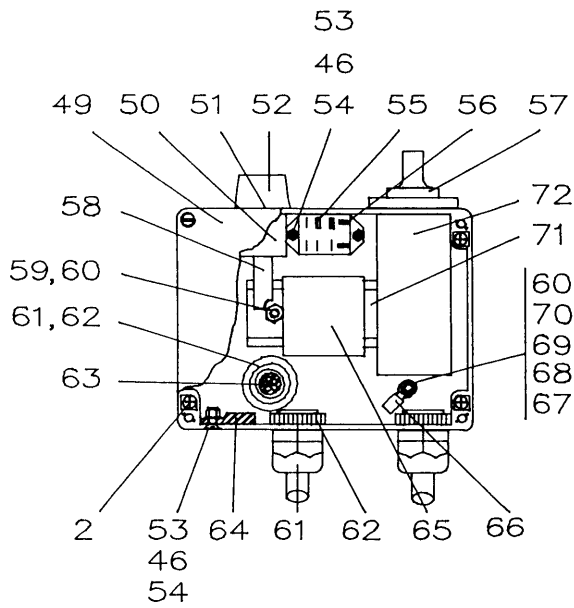
\* T.o.m maskin nr. 1073/Until machine No. 1073/Zu Maschine no. 1073

\*\* Fr.o.m maskin nr. 1074/From machine No. 1074/Ab Maschine no. 1074

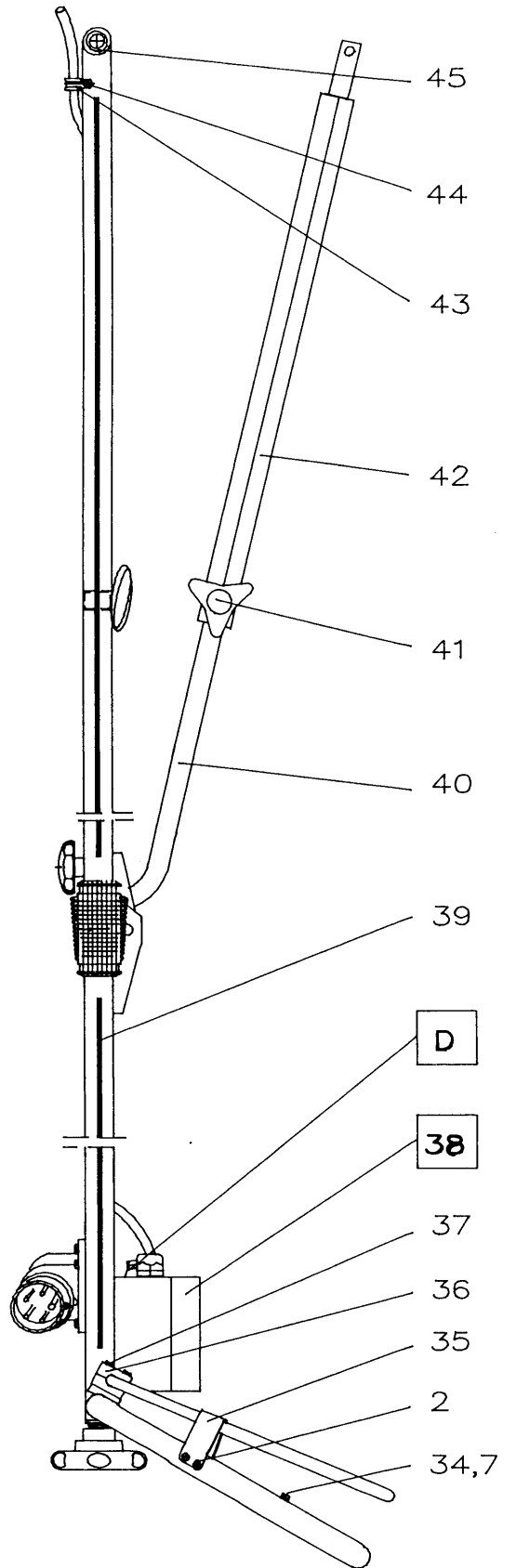
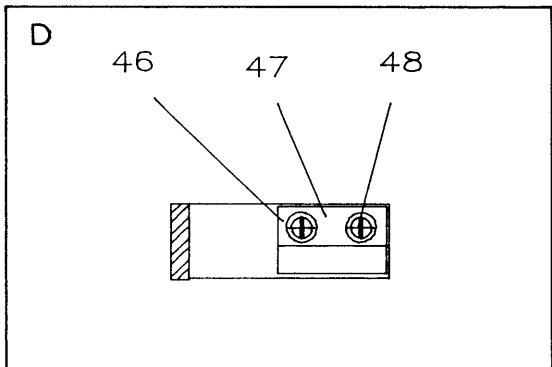
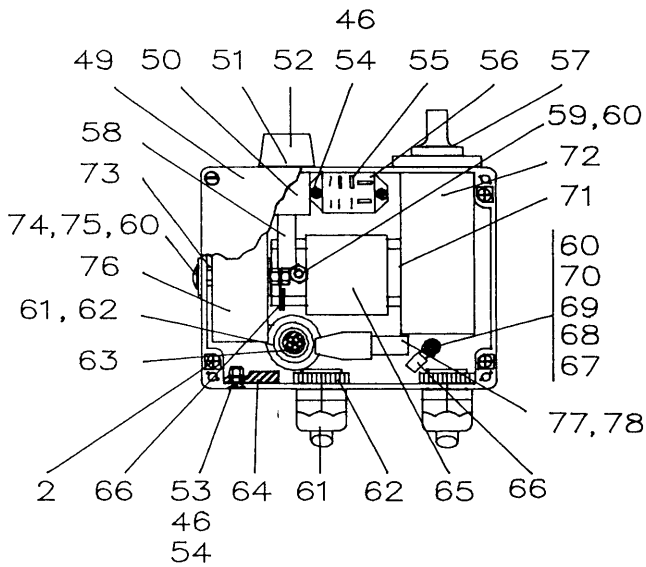
Vid byte till de nyare stagen på äldre maskiner, måste båda bytas samtidigt./ When assembling new stays on older machines, both stays have to be replaced at the same time./Bei montage von neuen Stangen auf älteren Maschinen, müssen beide alten Stangen gleichzeitig ersetzt werden.

|    |               |   |
|----|---------------|---|
| 38 | Utförande B:  | Elsystem med matningsspänning 200-230 V.<br>Elsystem med matningsspänning 380-415 V.  |
|    | Execution B:  | Electric system with feeder voltage 200-230V.<br>Electric system with feeder voltage 380-415V.  |
|    | Ausführung B: | Elektrisches System mit Zuführungsspannung 200-230 V.<br>Elektrisches System mit Zuführungsspannung 380-415V.                         |
|    | Utförande C:  | Elsystem med matningsspänning 380-415V + trafo.<br>Nollans stift ej anslutet.   |
|    | Execution C:  | Electric system with feeder voltage 380-415V +trafo.<br>Attention the 0 pin not connected   |
|    | Ausführung C: | Elektrisches System mit Zuführungsspannung 380-415V +<br>Transformator.<br>Achtung! Der Stift zur Nulleitung ist nicht angeschlossen. |

38 B



38 C

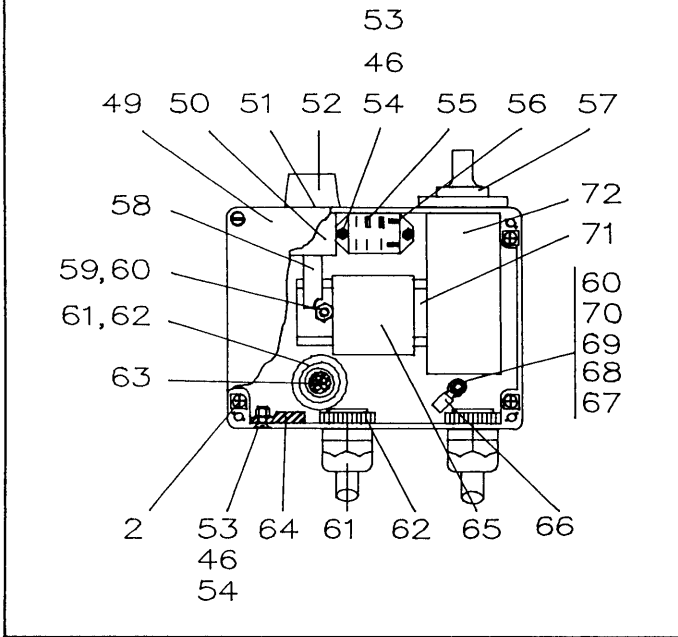


**RESERVDELSLISTA ♦ SPARE PARTS LIST ♦ ERSATZTEILVERZEICHNIS**

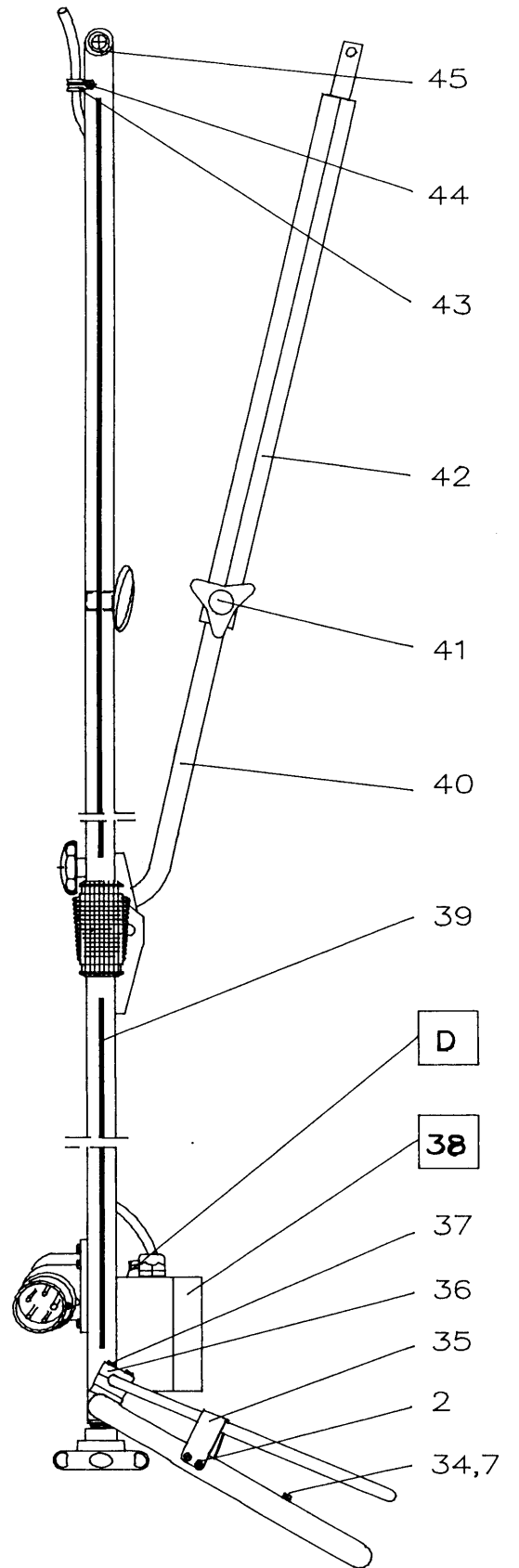
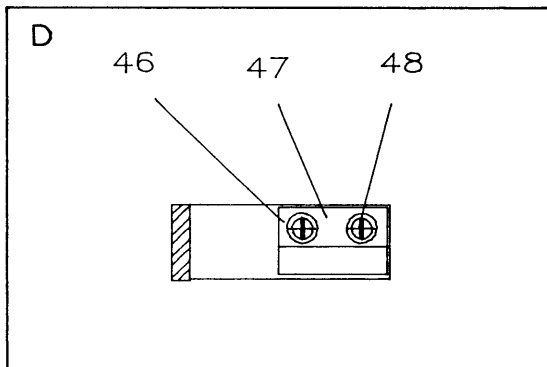
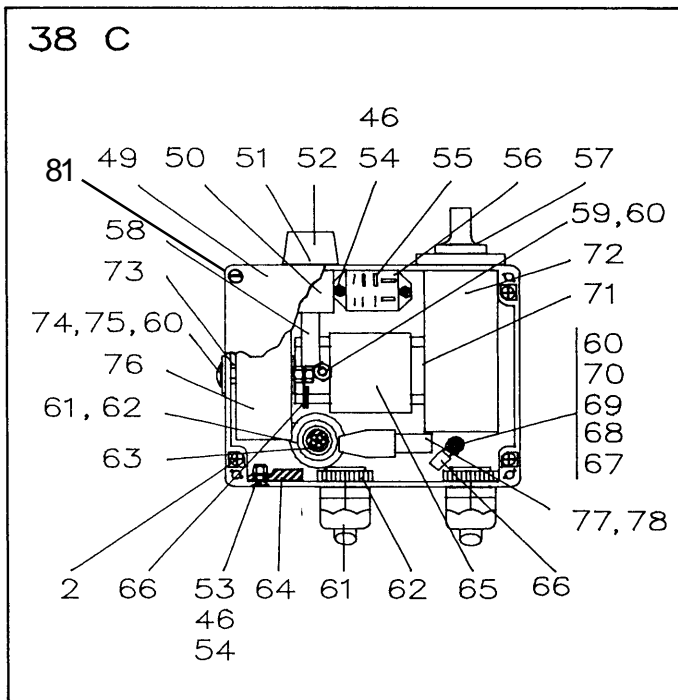
|         |   |
|---------|---|
| List No | <h2 style="margin: 0;">Tremix Planglättnare/Trowel/Plan-Glätter</h2> <h3 style="margin: 0;">G Combi E</h3> <p style="margin: 0;">Manöverhandtag/Operating handle/Bedienungs-handgriff</p> |
| 2:419   |   |
| Date    |   |
| 9508    |   |

| Pos                    | Qty | Benämning           | Denomination          | Benennung             | Note               | No.  |
|------------------------|-----|---------------------|-----------------------|-----------------------|--------------------|------|
| 54                     | 4   | Mutter              | Nut                   | Mutter                | M3 Nyloc           | x    |
| 55                     | 4   | Flatstifthylsa      | Flat pin sleeve       | Plattstifthülse       | A1504 FL8-1        | x    |
| 56                     | 1   | Relä                | Relay                 | Reglerschalter        | 2-pol              | 3312 |
| 57                     | 1   | Vred+skylt+tätning  | Lever+sign+sealing    | Griff+Schild+Dichtung |                    | 3452 |
| 58                     | 1   | Kontaktblock        | Contact block         | Kontaktplatte         |                    | 3264 |
| 59                     | 2   | Skruv               | Screw                 | Schraube              | MFS 5x10           | x    |
| 60                     | 5   | Mutter              | Nut                   | Mutter                | M5                 | x    |
| 61                     | 3   | Kabelförskruvning   | Gland nut             | Kabelver-schraubung   |                    | 1063 |
| 62                     | 3   | Kontramutter        | Counter nut           | Gegenmutter           |                    | 1065 |
| 63                     | 1   | Kabel               | Cable                 | Kabel                 | RDOE 0.3m          | 1022 |
| 64                     | 1   | Magnetgivare        | Magnet coupling       | Magnetschalte         |                    | 3313 |
| 65                     | 1   | Kontaktor 200-230 V | Contactactor 200-230V | Kontaktor 200-230V    |                    | 3384 |
|                        | 1   | Kontaktor 380-415V  | Contactactor 380-415V | Kontaktor 380-415V    |                    | 3401 |
| 66                     | 4   | Ringkabelsko        | Cable clip            | Kabelschuh            | A2553              | x    |
| 67                     | 1   | Skruv               | Screw                 | Schraube              | ECS 5x20           | x    |
| 68                     | 2   | Bricka              | Washer                | Scheibe               | BRB 5,3x15x15      | x    |
| 69                     | 1   | Bricka              | Washer                | Scheibe               | BRB 5,3x10x1       | x    |
| 70                     | 1   | Fjäderbricka        | Spring washer         | Federscheibe          | FBB M5             | x    |
| 71                     | 1   | Montageskena        | Assembly rail         | Montierungsschiene    | AM1-DP2000 L=80 mm |      |
| 72                     | 1   | Strömställare kpl   | Switch complete       | Schalter kompl.       |                    | 3402 |
| 73                     | 1   | Mutter              | Nut                   | Mutter                | M6                 | x    |
| 74                     | 1   | Vagnsbult           | Carriage bolt         | Wagenbolzen           | MVBF 5x50          | x    |
| 75                     | 2   | Bricka              | Washer                | Scheibe               | BRB 7,5x25x1,8     | x    |
| 76                     | 1   | Transformator       | Transformer           | Transformator         |                    | 3364 |
| 77                     | 1   | Säkringshållare     | Fuse holder           | Sicherungshalter      | 5x20               | 3366 |
| 78                     | 1   | Glasrörsäkring      | Glass tube fuse       | Glasrohr-sicherung    | 160mA              | 3365 |
| 79*                    | 1   | Styrning            | Guidance              | Steuerung             | 48270              |      |
| 80*                    | 1   | Styrning            | Guidance              | Steuerung             | 48286              |      |
| 81                     | 1   | Skruv               | Screw                 | Schraube              |                    |      |
| OBS!                   |     |                     | NOTE!                 | Zur Beachtung!        |                    |      |
| * Pos. 79 vänster sida |     |                     | * Pos. 79 left side   | * Pos. 79 links       |                    |      |
| Pos. 80 höger sida     |     |                     | Pos. 80 right side    | Pos. 80 rechts        |                    |      |

38 B



38 C

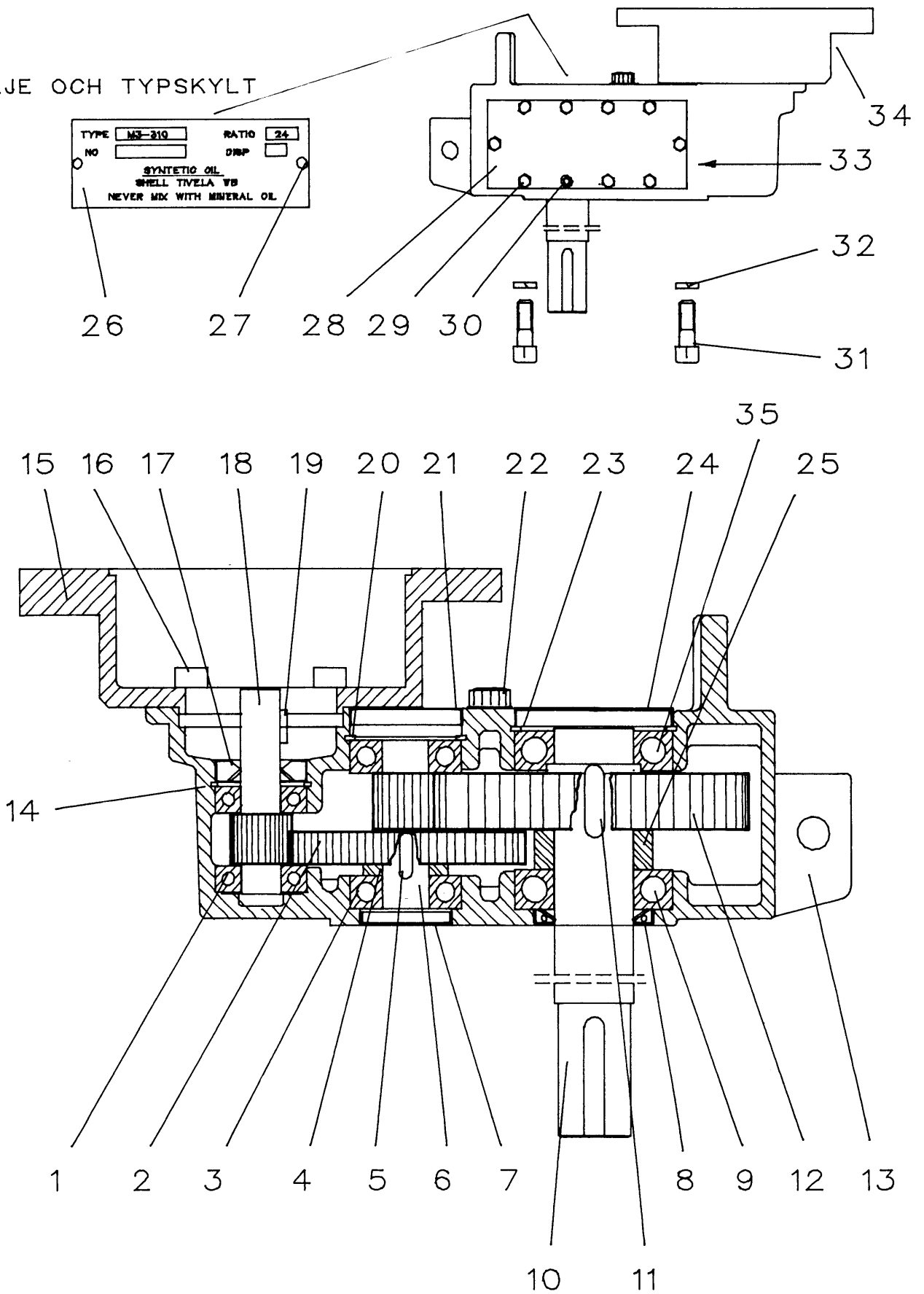
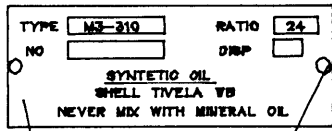


**RESERVDELSLISTA ♦ SPARE PARTS LIST ♦ ERSATZTEILVERZEICHNIS**

|         |  |
|---------|--|
| List No | <h2 style="margin: 0;">Tremix Planglättnare/Trowel/Plan-Glätter</h2> <h3 style="margin: 0;">G Combi E</h3> <p style="margin: 0;">Växellåda/Gear box/Getriebekasten</p> |
| 2:419   |  |
| Date    |  |
| 9508    |  |

| Pos | Qty | Benämning          | Denomination         | Benennung           | Note          | No.        |
|-----|-----|--------------------|----------------------|---------------------|---------------|------------|
| 1   | 2   | Kullager           | Ball bearing         | Kugellager          | 6203          | SD60062030 |
| 2   | 1   | Kuggjul            | Gear wheel           | Zahnrad             |               | SD93018091 |
| 2   | 1   | Kuggjul för 60 Hz  | Gear wheel for 60 Hz | Zahnrad für 60 Hz   |               | SD93018093 |
| 3   | 2   | Kullager           | Ball bearing         | Kugellager          | 6204          | SD60062040 |
| 4   | 1   | Distansring        | Spacer               | Distanzring         |               | SD93018103 |
| 5   | 1   | Kil                | Key                  | Keil                | R 6x6x20      | SD64066200 |
| 6   | 1   | Kuggaxel           | Gear shaft           | Zahnwelle           |               | SD93018801 |
| 6   | 1   | Kuggaxel för 60 Hz | Gear shaft for 60 Hz | Zahnwelle für 60 Hz |               | SD93018802 |
| 7   | 1   | Tättningslock      | Sealing cover        | Dichtungsdeckel     | VK 40         | SD62040076 |
| 8   | 1   | Tätning            | Sealing              | Dichtung            | 35 52 07      | SD62355271 |
| 9   | 1   | Kullager           | Ball bearing         | Kugellager          | 6207          | SD60062070 |
| 10  | 1   | Utgående axel      | Output shaft         | Herausgehende welle |               | SD93018071 |
| 11  | 1   | Kil                | Key                  | Keil                | RTK 8x22      | SD64108229 |
| 12  | 1   | Kuggjul            | Gear wheel           | Zahnrad             |               | SD93018081 |
| 12  | 1   | Kuggjul för 60 Hz  | Gear wheel for 60 Hz | Zahnrad für 60 Hz   |               | SD93018082 |
| 13  | 4   | Växelhus           | Gear housing         | Zahngchäuse         |               | SD93018051 |
| 14  | 1   | Låsring            | Locking ring         | Schlossring         | Sgh 40        | SD64000406 |
| 15  | 1   | Motorfläns         | Engine flange        | Motorflansch        |               | SD93018701 |
| 16  | 4   | Skruv              | Screw                | Schraube            | Mc6S 8x25 fzb | SD63080251 |
| 17  | 1   | Tätning            | Sealing              | Dichtung            | 17 40 07      | SD62174070 |
| 18  | 1   | Kuggaxel           | Gear shaft           | Zahnwelle           |               | SD93018711 |
| 18  | 1   | Kuggaxel för 60 Hz | Gear shaft for 60 Hz | Zahnwelle für 60 Hz |               | SD93018713 |
| 19  | 1   | Kil                | Key                  | Keil                | R 5x5x18      | SD64055180 |
| 20  | 1   | Låsring            | Locking ring         | Schlossring         | SgH 47        | SD64000476 |
| 21  | 1   | Tättningslock      | Sealing cover        | Dichtungsdeckel     | VK 47         | SD62047076 |
| 22  | 1   | Oljemätsticka      | Oil gauge rod        | Ölmesstab           |               | SD93018811 |
| 23  | 1   | Låsring            | Locking ring         | Schlossring         | SgH 72        | SD64000726 |
| 24  | 1   | Tättningslock      | Sealing cover        | Dichtungsdeckel     | VK 72         | SD62072096 |
| 25  | 1   | Distansring        | Spacer               | Distanzring         |               | SD93018102 |
| 26  | 1   | Olje- och typskylt | Oil and type sign    | Öl- und Typschild   |               | SD65000070 |
| 27  | 2   | Skruv              | Screw                | Schraube            | KDS 0x5       | SD63000058 |
| 28  | 1   | Lock               | Cover                | Deckel              |               | SD93018611 |
| 29  | 9   | Skruv              | Screw                | Schraube            | M6S 6x14      | SD63060140 |
| 30  | 1   | Skruv              | Screw                | Schraube            | MF6S 6x8      | SD63060142 |
| 31  | 4   | Skruv              | Screw                | Schraube            | MC6S 10x20    | x          |
| 32  | 4   | Fjäderbricka       | Spring washer        | Federscheibe        | FBB Ø 10,1    | x          |
| 33  | 1   | Packning           | Packing              | Dichtung            |               | SD93018121 |
| 34  | 1   | Plastplugg         | Plastic plug         | Kunststoff Propfen  | Gpn 300 F2    | 1710       |
| 35  | 1   | Kullager           | Ball bearing         | Kugellager          | 6207-2Z       | SD60062072 |

OLJE OCH TYP SKYLT



**RESERVDELSLISTA ♦ SPARE PARTS LIST ♦ ERSATZTEILVERZEICHNIS**

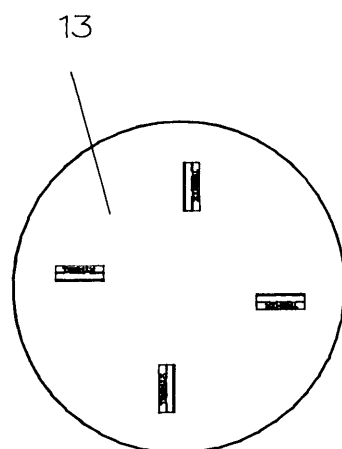
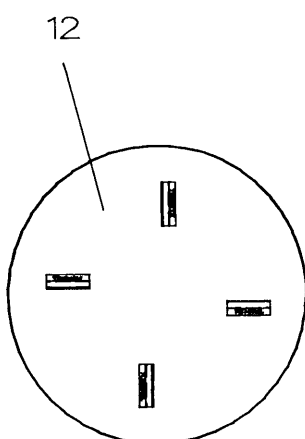
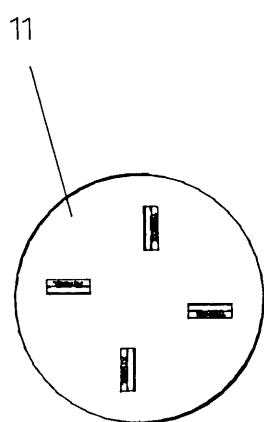
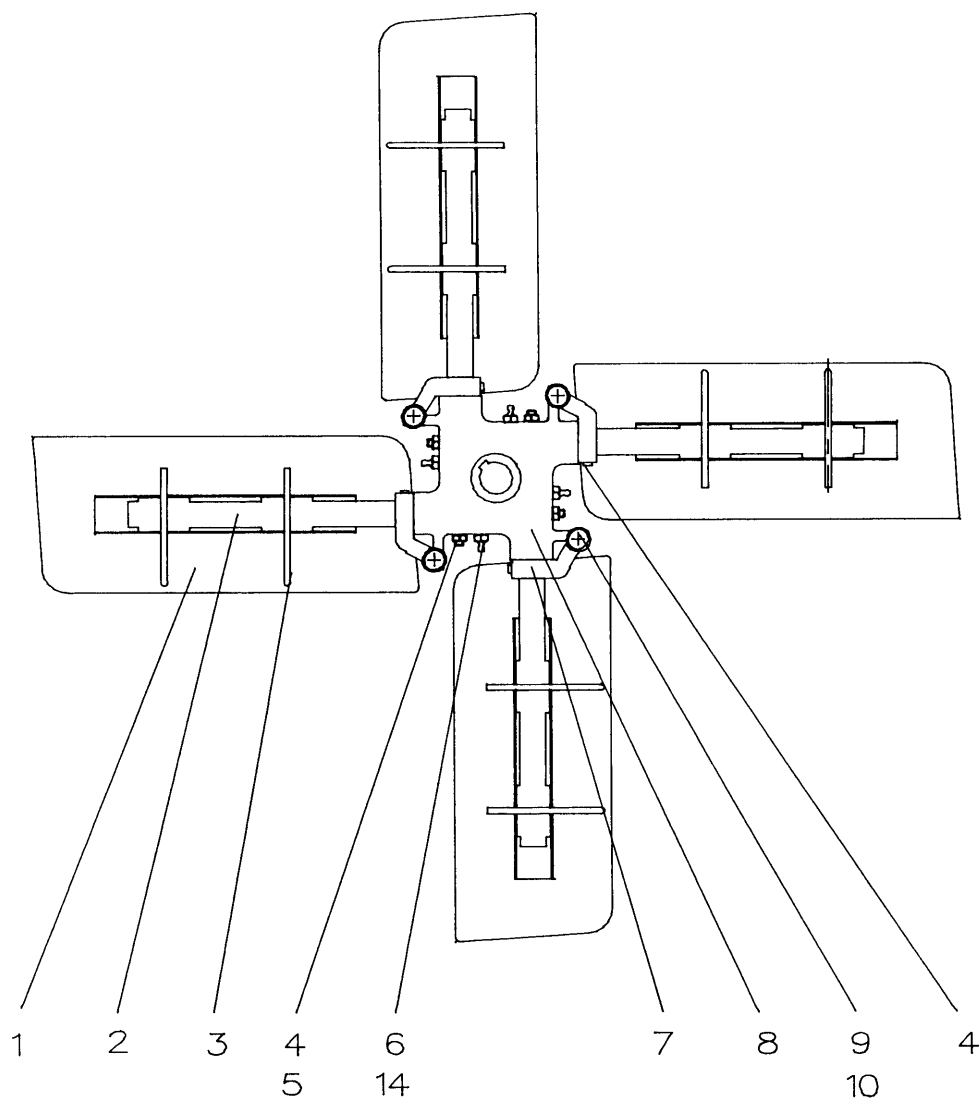
|         |   |
|---------|---|
| List No | <h1 style="margin: 0;">Tremix Planglättnare/Trowel/Plan-Glätter</h1> <h2 style="margin: 0;">G Combi E</h2> <p style="margin: 0;">Arbetsverktyg/Working tools/Arbeitswerkzeuge</p> |
| 2:419   |   |
| Date    |   |
| 9508    |   |

| Pos | Qty | Benämning                                     | Denomination                                 | Benennung   | Note       | No.   |
|-----|-----|---|--|---|------------|-------|
| 1   | 4   | Glättningsblad                                | Trowelling blades                            | Glättningsblättnar                                |            | 32337 |
| 2   | 4   | Bladaxel                                      | Blade shaft                                  | Blattwelle  |            | 21884 |
| 3   | 8   | Hårnålsprint                                  | Pin  | Splint  |            | 1961  |
| 4   | 8   | Stoppsskruv                                   | Stop screw                                   | Anschlageschraube                                 | T6SS 8x20  | x     |
| 5   | 4   | Mutter  | Nut  | Mutter  | M8         | x     |
| 6   | 4   | Smörjnippel                                   | Lubricator                                   | Schmierbüchse                                     | M8x1,25    | 1905  |
| 7   | 4   | Arm   | Arm  | Arm   |            | 46249 |
| 8   | 1   | Nav   | Hub  | Nabe  |            | 32065 |
| 9   | 4   | Vagnsbult                                     | Bolt   | Bolzen  | MVBF 10x40 | x     |
| 10  | 4   | Mutter  | Nut  | Mutter  | M10        | x     |
| 11  | 1   | Planingsskiva Ø 865                           | Floating disc Ø 865                          | Ausgleichscheibe Ø 865                            |            | 32397 |
| 12  | 1   | Planingsskiva Ø 950                           | Floating disc Ø 950                          | Ausgleichscheibe Ø 950                            |            | 31937 |
| 13* | 1   | Planingsskiva Ø 1015                          | Floating disc Ø1015                          | Ausgleichscheibe Ø 1015                           |            | 32473 |
| 14  |     | Fett Shell Regina<br>Grease 2 eller likvärdig | Grease Shell Regina<br>"Grease 2" or similar | Fett Shell Regina<br>"Grease 2" oder gleichwertig |            |       |

\* Planingsskivan dia 1015 får endast användas på G Combi E fr.om maskinnummer 134.  
Maskinen utrustades då med en starkare elmotor.

\* Floating disc dia 1015 can only be used on the Skimfloater G Combi E from machine No 134.  
The machine was equipped with a stronger electric motor.

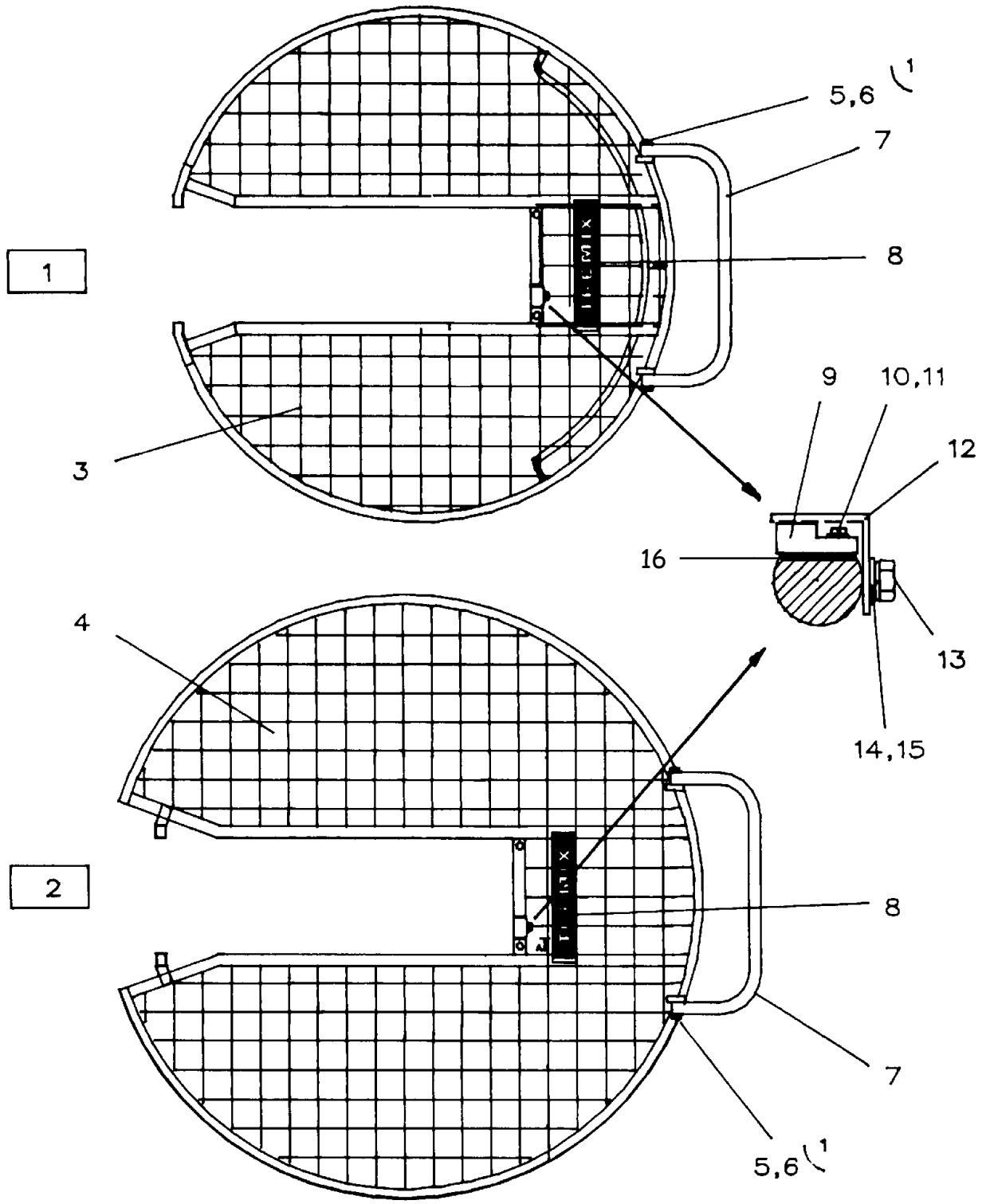
\* Ausgleichscheibe Durchmesser 1015 mm darf nur auf dem Glätter G Combi E aus maschine No 134.  
Die Maschine wurde mit einem stärkeren Elektromotor ausgerüstet.



**RESERVDELSLISTA ♦ SPARE PARTS LIST ♦ ERSATZTEILVERZEICHNIS**

|         |  |
|---------|--|
| List No | <h2 style="margin: 0;">Tremix Planglättare/Trowel/Plan-Glätter</h2> <h3 style="margin: 0;">G Combi E</h3> <p style="margin: 0;">Skyddskåpa/Cover/Schutzkappe</p> |
| 2:419   |  |
| Date    |  |
| 9508    |  |

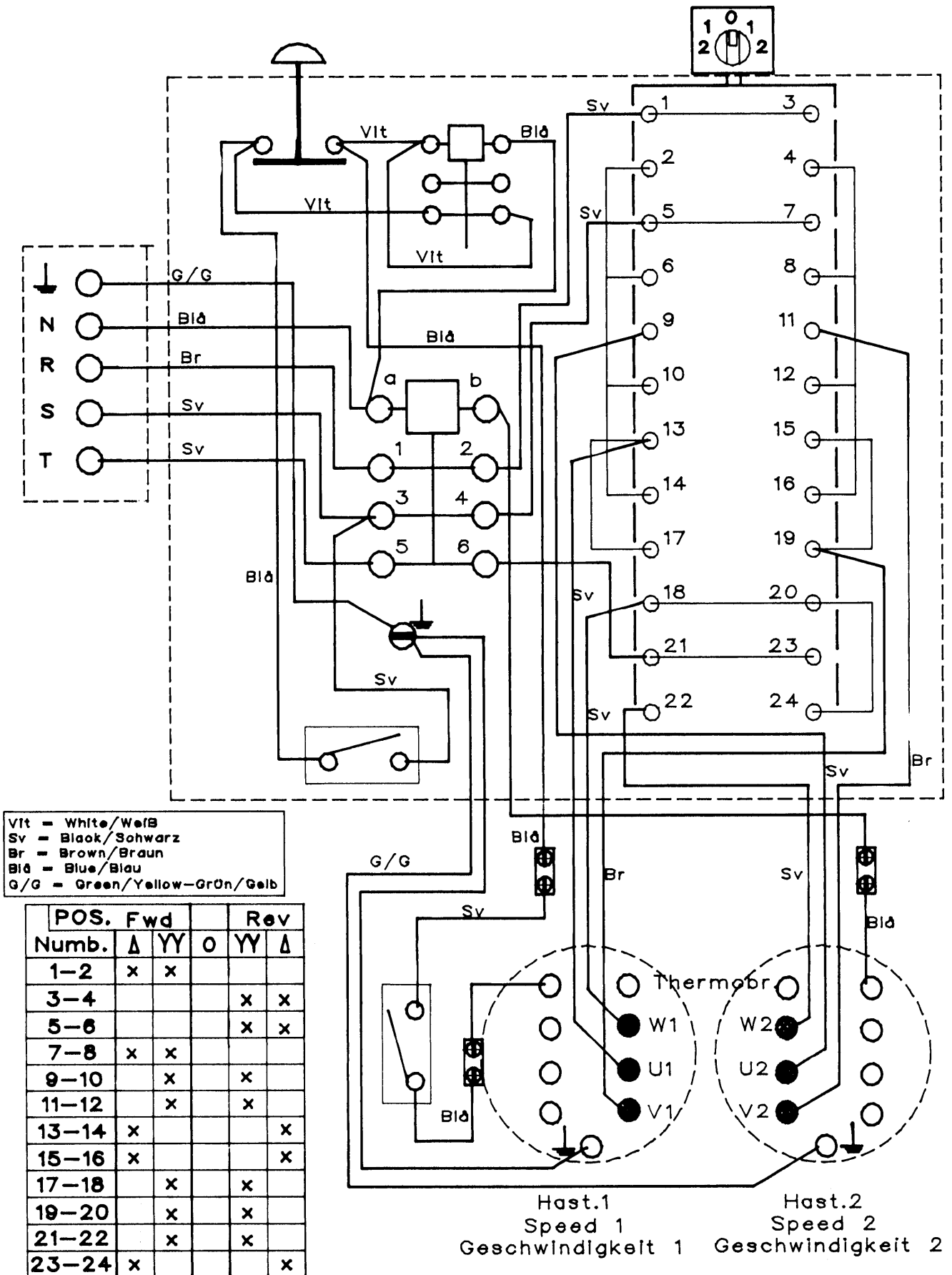
| Pos | Qty | Benämning                        | Denomination                | Benennung                       | Note          | No.   |
|-----|-----|----------------------------------|-----------------------------|---------------------------------|---------------|-------|
| 1   | 1   | Skyddskåpa Ø 855 mm<br>Komplett  | Cover Ø 855 mm<br>complete  | Schutzkappe Ø 855 mm<br>kompl.  |               | 21944 |
| 2   | 1   | Skyddskåpa Ø 1000 mm<br>Komplett | Cover Ø 1000 mm<br>complete | Schutzkappe Ø 1000 mm<br>kompl. |               | 11652 |
| 3   | 1   | Skyddskåpa Ø 855 mm              | Cover Ø 855 mm              | Schutzkappe Ø 855 mm            |               | 11639 |
| 4   | 1   | Skyddskåpa Ø 1000 mm             | Cover Ø 1000 mm             | Schutzkappe Ø 1000 mm           |               | 11640 |
| 5   | 2   | Skruv                            | Screw                       | Schraube                        | M6S 8x30      | x     |
| 6   | 2   | Bricka                           | Washer                      | Scheibe                         | BRB 8.4x16    | x     |
| 7   | 1   | Lyftbygel                        | Lifting eye                 | Hebebügel                       |               | 32070 |
| 8   | 1   | Dekal                            | Label                       | Abziehbild                      |               | 1465  |
| 9   | 1   | Magnet                           | Magnet                      | Magnet                          |               | 3314  |
| 10  | 2   | Skruv                            | Screw                       | Schraube                        | ECS 3x8       | x     |
| 11  | 2   | Bricka                           | Washer                      | Scheibe                         | BRB 3.2x6x0.5 | x     |
| 12  | 1   | Huv                              | Hub                         | Kappe                           |               | 47273 |
| 13  | 1   | Skruv                            | Screw                       | Schraube                        | M6S 6x12      | x     |
| 14  | 1   | Bricka                           | Washer                      | Scheibe                         | BRB 8.4x16    | x     |
| 15  | 1   | Fjäderbricka                     | Spring washer               | Federscheibe                    | Ø 5.1         | x     |
| 16  | 1   | Isolerbricka                     | Washer                      | Scheibe                         |               | 47950 |



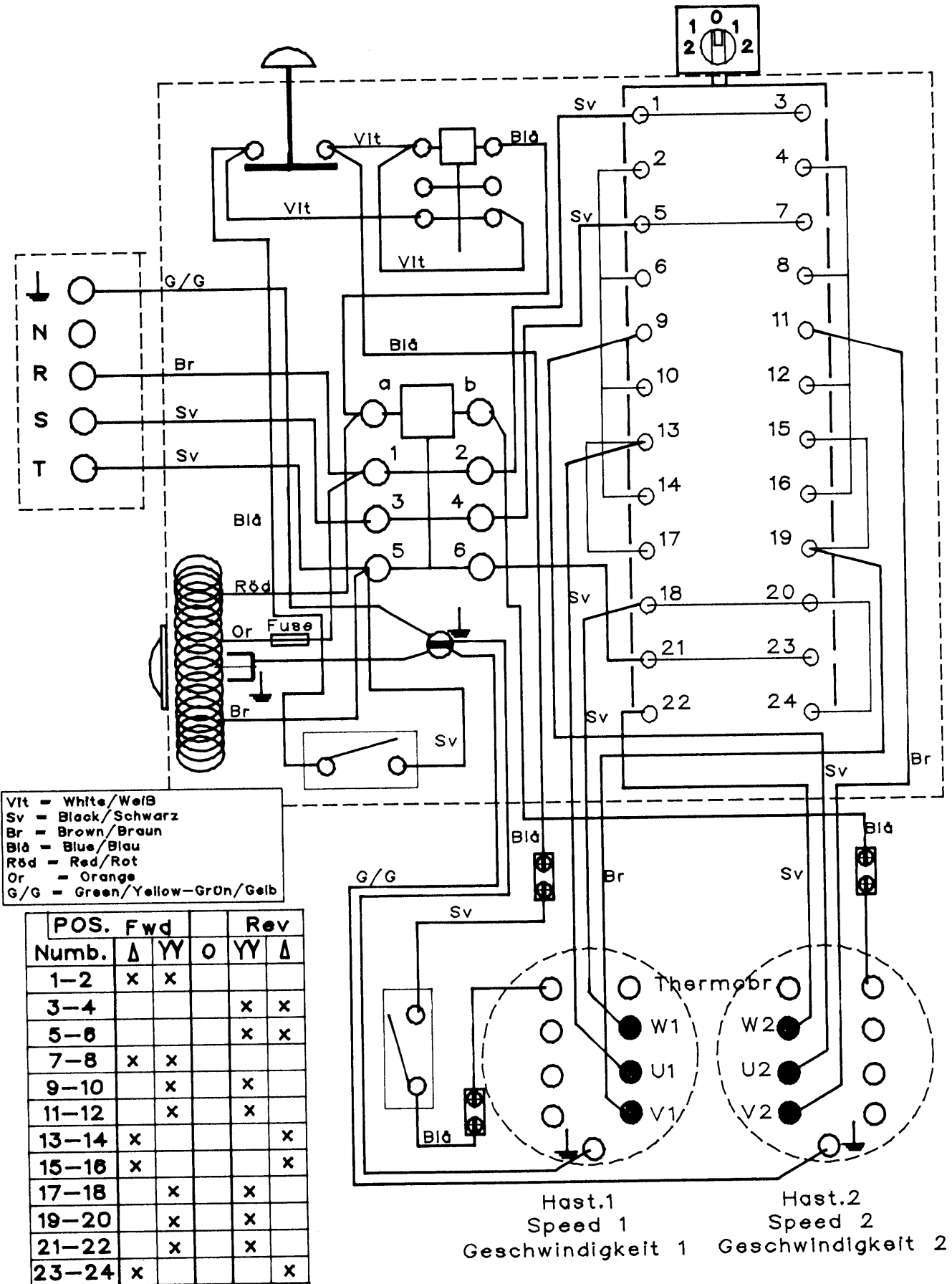
LOCTITE

RESERVDELSLISTA • SPARE PARTS LIST • ERSATZTEILVERZEICHNIS

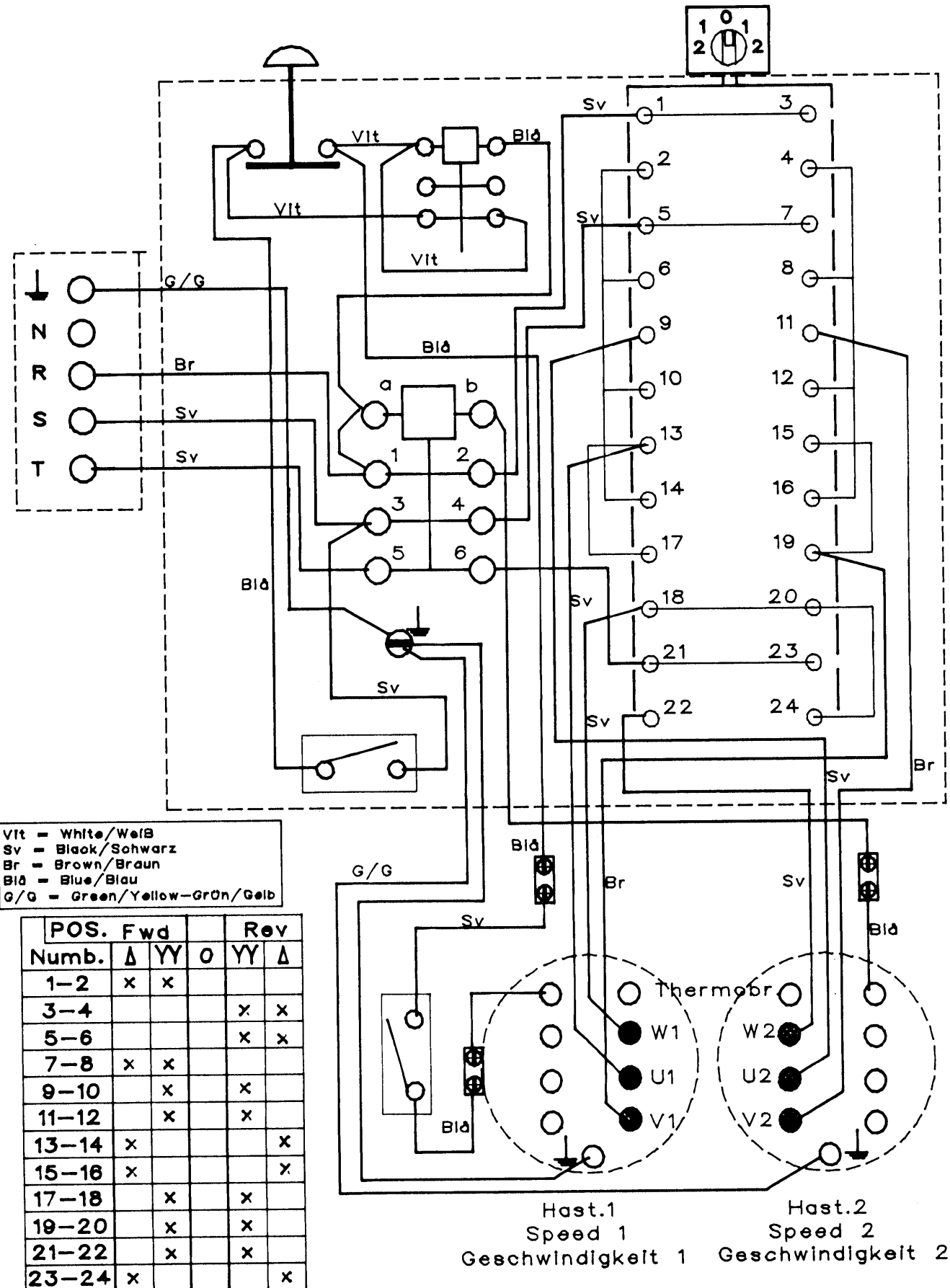
KOPPLINGSSCHEMA 380 - 415 V/WIRING DIAGRAM 380 - 415 V/SHALTPLAN 380 - 415 V



KOPPLINGSSCHEMA 380 - 415 V MED TRANSFORMATOR  
 WIRING DIAGRAM 380 - 415 V WITH TRANSFORMATOR  
 SHALTPLAN 380 - 415 V MIT TRANSFORMATOR



KOPPLINGSSCHEMA 200 - 230 V, 3-FAS  
 WIRING DIAGRAM 200 - 230 V, 3-PHASE  
 SHALTPLAN 200 - 230 V, 3-PHASE





### RESERVDLSBESTÄLLNING

För att undvika felleveranser vid reservdelsbeställning är det angeläget att produkttyp och tillverkningsnummer såväl som pos., antal, benämning och detaljnummer anges.

### SPARE PARTS ORDERING

To prevent wrong deliveries, your orders should specify type of product, serial number as well as item No., quantity, denomination and part No.

### ERSATZTEILBESTELLUNG

Um fehlerhafte Lieferungen bei Ersatzteilbestellung zu vermeiden, ist es wichtig, daß Typ und Herstellungsnummer sowie Position, Anzahl, Benennung und Teil-Nr. angegeben werden.

